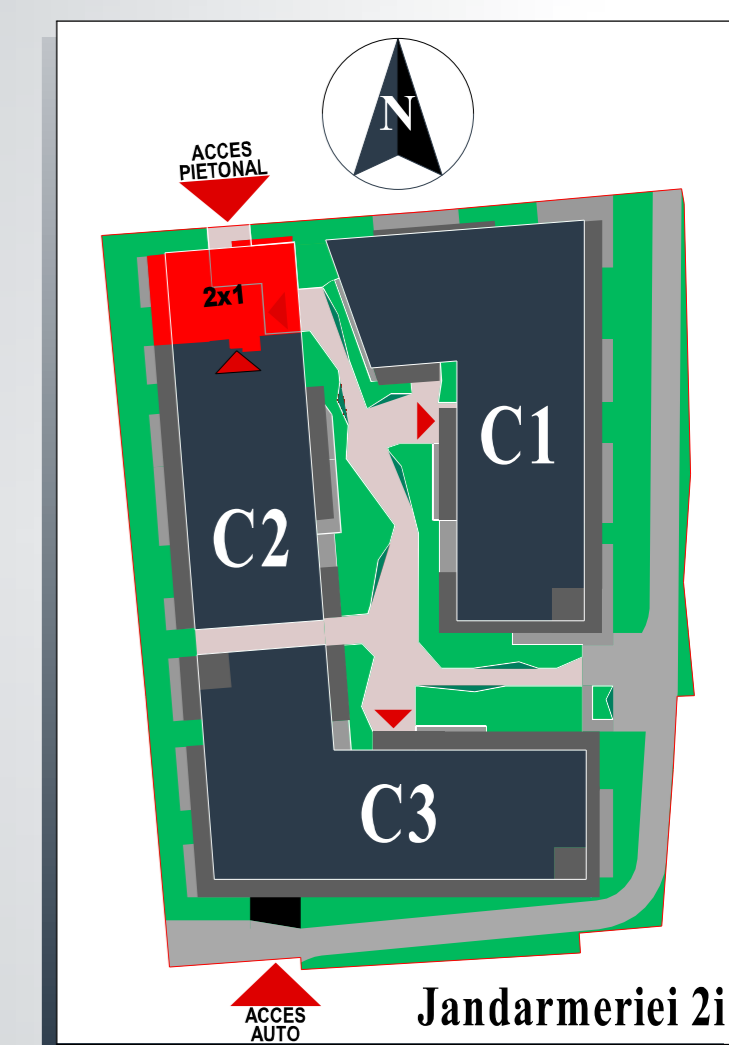
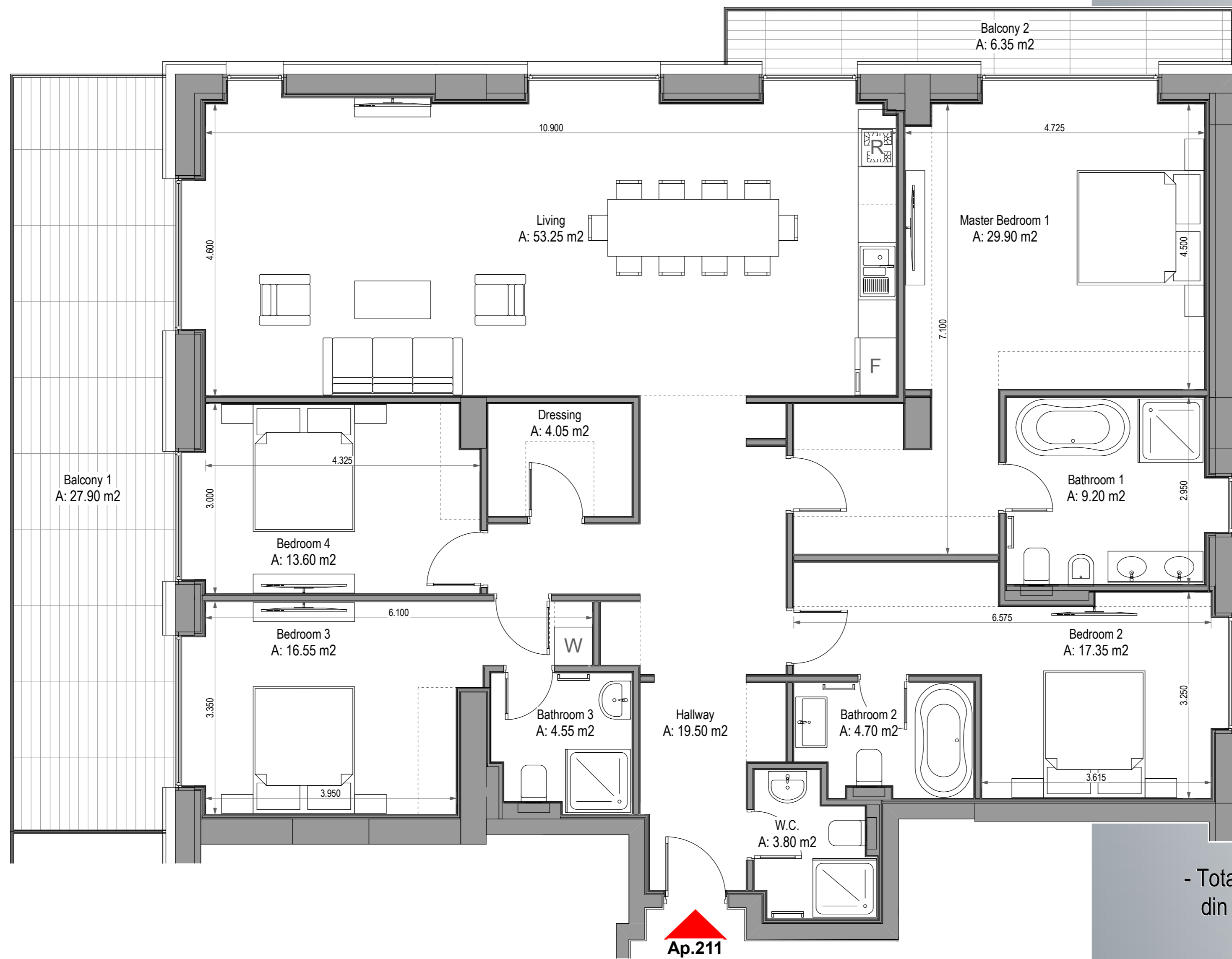


# 211

## Apartment 5 Camere



- Total Suprafata Construita Apartament: **248.50** mp  
din care Suprafata Construita Balcoane: **35.55** mp

- Total Suprafata Utila Apartament: **210.70** mp  
din care Suprafata Utila Balcoane: **34.25** mp

**Nota:** Dimensiunile si suprafete pot varia cu  $\pm 3\%$ ; Piese de mobilier si aparatura electrocasnica sunt prezentate in mod orientativ si nu sunt incluse in oferta vanzatorului.

Scara: 1:60 Format A2L: 590mm x 400mm